

Oracle Integration Cloud Service



KEY FEATURES

- Self-service portal to activate your integrations in minutes
- Native connectivity to SaaS and on-premise applications
- Graphical tools covering full lifecycle from design to monitoring
- Import and export integrations to Cloud Marketplace
- Runs on Oracle's enterprise-grade cloud infrastructure

KEY BENEFITS

- Immense productivity improvement for developers and administrators with instant, self-service integration platform managed by Oracle
- Accelerated time to market with self-service provisioning and intuitive tools
- Rapid deployment with readymade integrations from Oracle and Cloud Marketplace
- Zero coding and configuration with point-and-click user interface
- Highly available, scalable integration platform at your fingertips with simple subscription

Software as a Service adoption is driving the need for a cloud based integration solution. When businesses run their applications in the cloud, connecting information and processes between them and to on-premise systems is critical. Integration is expected to match the SaaS criteria – instant provisioning, rapid development, maintenance-free and scalable. Oracle Integration Cloud Service is a pure cloud based platform for highly productive, simplified integration in the cloud.

Integration for the Cloud Company

Software as a Service offerings have become widely popular for their ease of deployment and scalability. Yet often they have grown into isolated silos failing to deliver their full potential. SaaS adoption is often driven by business units or even individuals out of reach of the IT organization resulting in lack of connections to other IT systems, or implementing complex ad hoc point-to-point integrations. Connecting cloud applications to each other and to on-premise applications and data is required to fully utilize organizational business benefits, productivity and return on investment. When organization's business applications run in the cloud it makes sense to integrate them natively in the cloud. Oracle Integration Cloud Service solves the SaaS to SaaS and SaaS to on-premise integration challenges providing service oriented architecture (SOA) best practices with all the cloud benefits.

Rapid deployment with native connectivity and packaged integrations

Oracle Integration Cloud Service comes with native connectivity to Oracle software as a service offerings and several third party applications. As an Oracle SaaS subscriber, your applications are preconfigured in the Integration Cloud Service for instant integration. To bootstrap development, Oracle provides readymade integration packages for different applications and business scenarios. Customers can access these integration packages from the Oracle Cloud Marketplace. The Cloud Marketplace is also the avenue where customers can discover and shop for pre-packaged integrations provided by partners. With Oracle Integration Cloud Service, integrations can be done in three simple steps: subscribe, acquire and activate a prepackaged integration, customize only if needed. Complex cloud integrations that used to take months can now be done in hours.

Intuitive graphical development environment

Oracle Integration Cloud Service makes integration development simple and productive.

SUPPORTED CLOUD CONNECTIVITY

Existing connectivity in Integration Cloud Service include:

- Oracle Sales Cloud
- Oracle Service Cloud (RightNow)
- Oracle Marketing Cloud (Eloqua)
- Oracle Human Capital Management
- Salesforce.com
- Oracle Messaging Cloud Service
- Generic Web Services (SOAP)

When you need to go beyond deploying readymade integrations, Integration Cloud Service provides a point-and-click development environment requiring minimal configuration and zero coding, using concepts and terminology familiar to application users. The interface runs in a web browser, enabling development and administration even on mobile devices. Simply choose applications for integration endpoints, define messaging and error handling, and optionally enrich integrations with more advanced configurations. The interface also features a graphical data mapper that enables users to accelerate mappings through a simplified drag and drop interface, and most importantly, integrates with Oracle Recommends™, a feature that provides the user intelligent recommendations on mappings based on a semantic inference engine. Integrations can also utilize lookup tables for automatic value mappings.

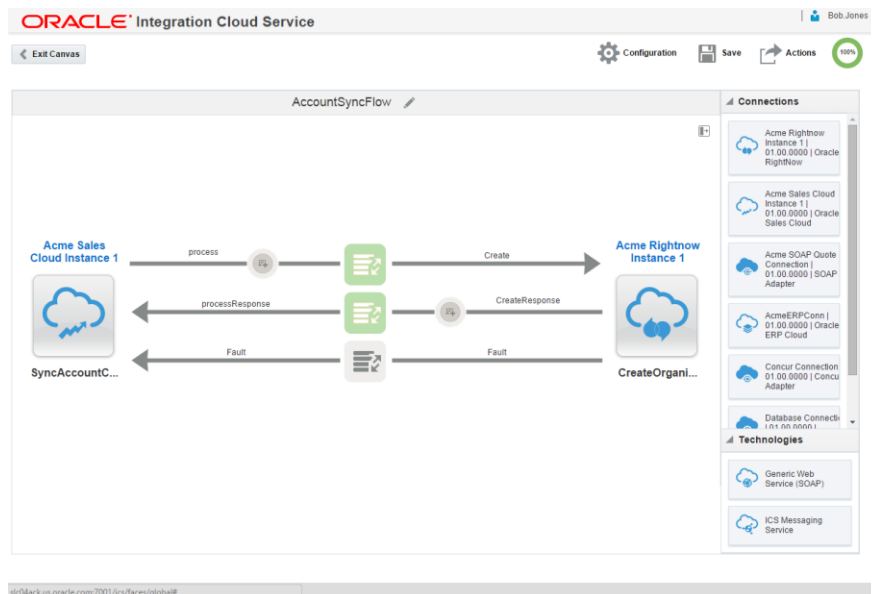


Figure 1. Integration Cloud Service flow composer

Application connectivity is supported through a library of rich adapters, eliminating the complexity of hand-coded integration with complex application endpoints. Adapters expose meaningful services and business objects that are more straightforward to consume without expert insight.

Monitoring and Error Handling

Oracle Integration Cloud Service provides developers and administrators monitoring dashboards with 360 degrees view on their integrations including message in-flow, failure rate and other key metrics. Users can also search for transactions of interest based on key business identifiers such as Order # or Product Names, identify failed transactions, drill down for root-cause analysis, and also review, resubmit, and abort errored transactions, all from a single monitoring dashboard.

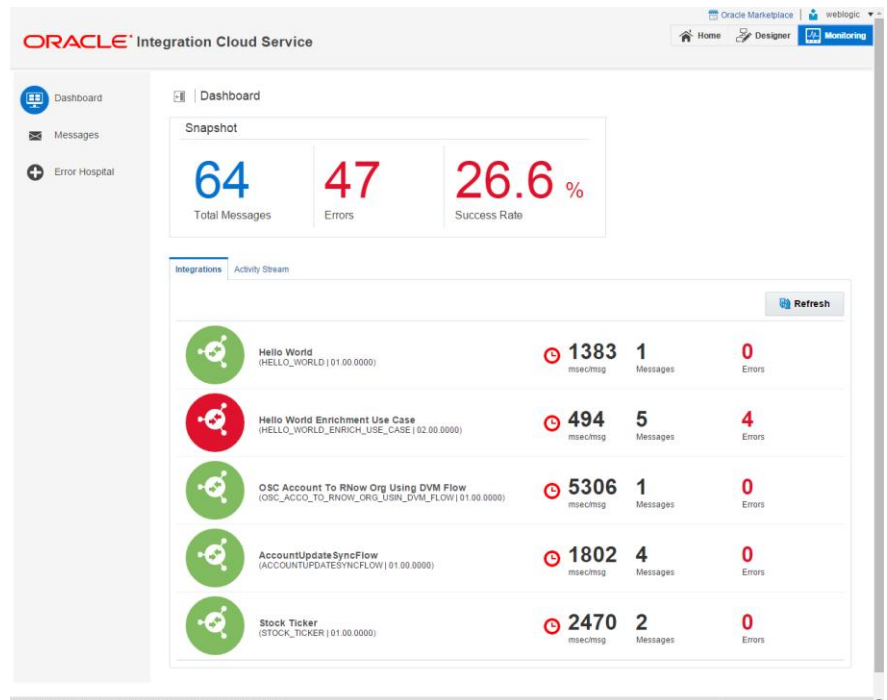


Figure 2 Monitoring dashboard

Security built in

Oracle Integration Cloud Service supports security built in. Web Service calls can be secured with basic authentication, WS-Security username/token, or other mechanisms, along with transport level security using SSL/TLS. Furthermore, Integration Cloud Service runs on Oracle's secure enterprise grade cloud infrastructure with each tenant getting their own dedicated environment

More Information

For more information, go to <http://cloud.oracle.com/integration>



CONTACT US

For more information about Oracle Integration Cloud Service, visit oracle.com or call +1.800.ORACLE1 to speak to an Oracle representative.

CONNECT WITH US



blogs.oracle.com/soa



facebook.com/oraclesoa



twitter.com/oraclesoa



oracle.com/integration

Hardware and Software, Engineered to Work Together

Copyright © 2015, Oracle and/or its affiliates. All rights reserved. This document is provided for information purposes only, and the contents hereof are subject to change without notice. This document is not warranted to be error-free, nor subject to any other warranties or conditions, whether expressed orally or implied in law, including implied warranties and conditions of merchantability or fitness for a particular purpose. We specifically disclaim any liability with respect to this document, and no contractual obligations are formed either directly or indirectly by this document. This document may not be reproduced or transmitted in any form or by any means, electronic or mechanical, for any purpose, without our prior written permission.

Oracle and Java are registered trademarks of Oracle and/or its affiliates. Other names may be trademarks of their respective owners.

Intel and Intel Xeon are trademarks or registered trademarks of Intel Corporation. All SPARC trademarks are used under license and are trademarks or registered trademarks of SPARC International, Inc. AMD, Opteron, the AMD logo, and the AMD Opteron logo are trademarks or registered trademarks of Advanced Micro Devices. UNIX is a registered trademark of The Open Group. 0515



Oracle is committed to developing practices and products that help protect the environment